

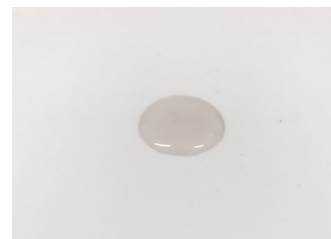
CERTIFICATE OF ANALYSIS No.: 2021-3983

CLIENT

Natural Hemp Life, Panska 5 / 26
00-124 Warszawa, Poland

SAMPLE

CBD E-JUICE 5 % CBD



Sample condition: SUITABLE
Sample ID: 211091
Sample type: Viscous liquid
Batch No.: KAS61329

Work order: 2021-104904
Analysis ID: 2021_061
Method ID: PHL_RPC_12C
Method SOP: MET-002

Sample received: 16/03/2021
Start of analysis: 17/03/2021
End of analysis: 19/03/2021
Analyst: Janez Gerdenc

CANNABINOID PROFILE	Concentration [% w/w]	Expanded uncertainty [% w/w]	Graphic presentation of relative cannabinoid concentration
CBDV - Cannabidivarin	< LOQ	n/a	_____
CBDA - Cannabidiolic acid	< LOQ	n/a	_____
CBGA - Cannabigerolic acid	< LOQ	n/a	_____
CBG - Cannabigerol	< LOQ	n/a	_____
CBD - Cannabidiol	5.77	0.29	<div style="width: 100%; height: 10px; background-color: #90EE90;"></div>
THCV - Tetrahydrocannabivarin	< LOQ	n/a	_____
CBN - Cannabinol	< LOQ	n/a	_____
CBC - Cannabichromene	< LOQ	n/a	_____
THC - Δ-9-Tetrahydrocannabinol	< LOQ	n/a	_____
THCA - Δ-9-Tetrahydrocannabinolic acid	< LOQ	n/a	_____
8-THC - Δ-8-Tetrahydrocannabinol *	< LOQ	n/a	_____
CBL - Cannabicyclol *	< LOQ	n/a	_____

The results marked by * relate to non-accredited activity.

Units and abbreviations: % w/w = weight percent, < LOQ = below the limit of quantitation (0.03 % w/w), ND = not detected, n/a = not available.

The results given herein apply only to the sample as received. Expanded Uncertainty was calculated using coverage factor k = 2, corresponding to a double standard uncertainty and characterizes the interval value in which it is possible to expect the real value with a probability of 95%. This is stated according to the ISO/IEC Guide 98-3.

Total or partial reproduction of this document is not allowed without the permit from PharmaHemp d.o.o. The document does not substitute any other legal document.

Date issued:

19/03/2021

Approved by:



mag. Marko Dragan
Analytical Laboratory Manager

Authorized by:



dr. Boštjan Jančar
Chief Technology Officer

End of Certificate